

Texada HydraPressed Slabs

Texada HydraPressed Slabs are hydraulically pressed using an advanced method of producing concrete paving resulting in a cured slab with incredible strength. Texada Slabs have a light shot-blast “architectural finish” producing subtle colors with a distinctive elegant appearance.



Standard Sizes: 24” X 24” X 2”, 24” X 12” X 2”, & 18” X 18” X 1-5/8”

Approximate Weight

22.5 lbs/sqft (24”)

18.5 lbs/sqft (18”)

Concrete strength:

8000 PSI (55 MPA)

Absorption:

Shall not exceed 5%

Flexural strength:

Average flexural (transverse) strength of the concrete paving slabs shall be at least 725 PSI (5 MPA) when tested in accordance with CSA A231.1-14

ASTM C1782/C1782M-16

Center point load test of pedestal-supported slabs:

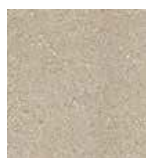
1800 lbs.



Natural



Charcoal



Desert Sand



Tan



Red



Brown